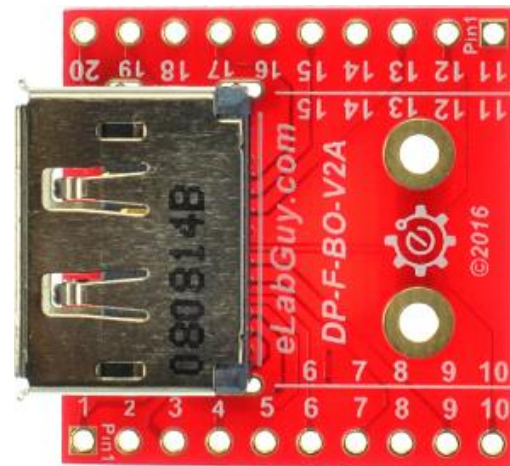


DP-F-BO-V2A

1. Description:

DP-F-BO-V2A is a simple Displayport Female socket breakout board. It brings all 20 pins of a Displayport Female socket to screw terminal blocks or headers for easy testing, prototyping and breadboard connection. For breadboard connections, user can use the two 10pin headers on both sides of the breakout board to connect to the front end of the breadboard for a steady connection.



2. Features:

- All 20 pins of a Displayport Female Socket brought out to headers or screw terminal blocks
- Various connecting method chosen by users.
- 2 mounting holes with 2mm diameter hole size
- 1.0"(25.4mm)X1.0"(25.4mm) board dimensions

3. Parts:

- 1) 1pc X DP-F-BO-V2A PCB
- 2) 1pc X Displayport Female socket
- 3) 2pc X 10pin 0.1"(2.54mm) spacing terminal block
- 4) 1pc X 20pin 0.1"(2.54mm) header

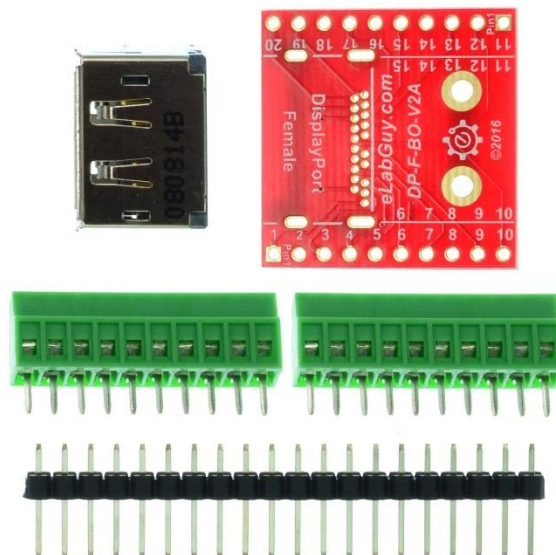


Figure 1: Parts inside the kit
(Note: the module is not assembled, user can decide which connector to use on the module.)

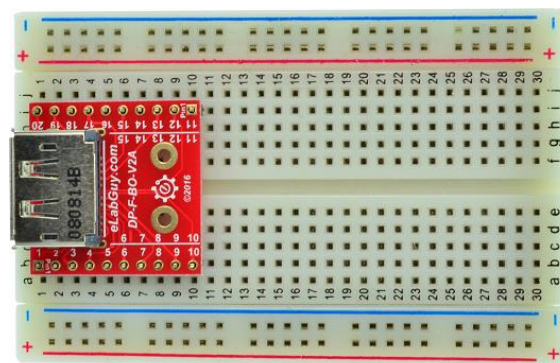


Figure 2: Example of connecting the DP-F-BO-V2A on a breadboard



Figure 3: DP-F-BO-V2A with headers



Figure 4: DP-F-BO-V2A with terminal blocks

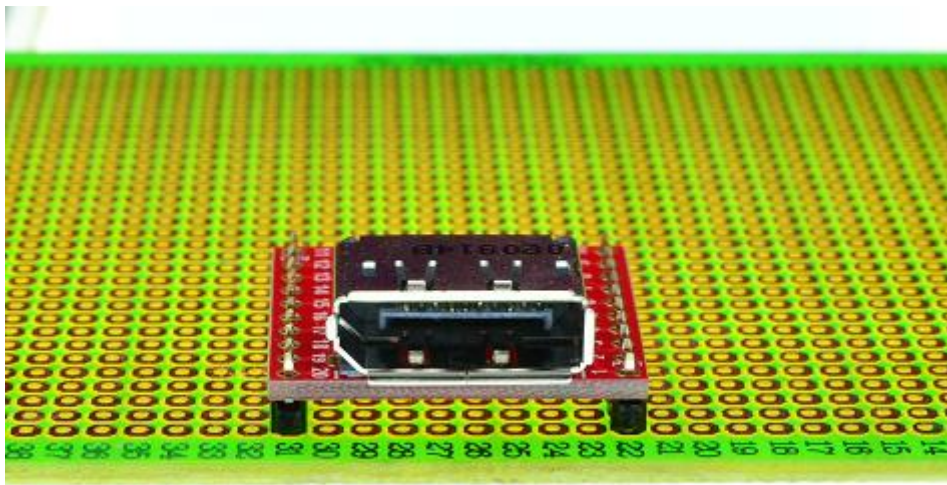
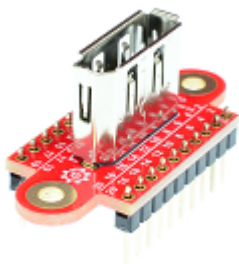


Figure 5: Solid Mounting on prototype PCB

Related product from eLabGuy:



DP-F-BO-V1AV



DP-F-BO-V1AS